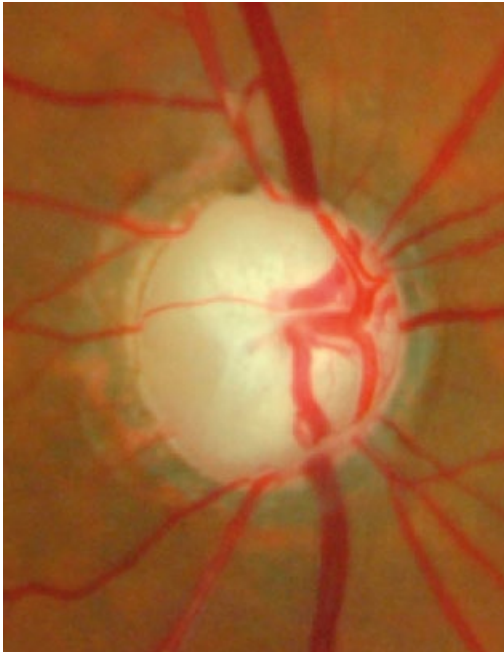


Picture quiz



A 75-year-old woman presents with painless blurring of vision in the right eye for the last few months. The visual acuity is 6/60 in that eye. The photograph shows the optic disc.

© RUPERT BOURNE CC BY-NC 4.0

Select ALL that are TRUE

Question 1

The following features can be seen in the optic disc photo

- a. Swelling of the optic disc
- b. An extremely thin optic disc rim
- c. Parapapillary atrophy
- d. Nasal displacement of the central retinal vessels

Question 2

Characteristics of glaucomatous optic disc include:

- a. Disc haemorrhages
- b. Thinning of the optic disc rim, usually nasally
- c. Generalised/focal enlargement of the cup

Question 3

Appropriate next steps in this patient would include:

- a. A full ocular examination of both eyes including visual acuity (individual eyes), intraocular pressure measurements, examining the optic disc in the other eye and looking for secondary causes of glaucoma, such as uveitis or trauma
- b. Discharging the patient if both eyes have poor vision from advanced glaucoma as nothing more can be done
- c. Advising family members to be screened for glaucoma

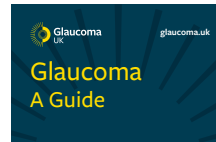
ANSWERS

1. Answer: b, c and d. There is no optic disc swelling. This disc shows advanced glaucomatous cupping of the optic disc.
 2. a and c. Thinning of the optic disc rim is characteristic of glaucoma, but this usually occurs at the superior and inferior poles (see article 'The optic nerve head in glaucoma').
 3. a and c. It is very important to do a full examination of both eyes. If the intraocular pressures are high they should be treated urgently. It is very important to stop further glaucomatous damage and vision loss. If patients have already developed vision loss due to glaucoma they should be given appropriate advice and support including referral to peer support groups.
 counselling services and access to appropriate low vision aids. Family members of glaucoma patients should be screened for glaucoma; this can be done by optometrists in some settings.

Webinar – save the date!

Join us for the *Community Eye Health Journal* Glaucoma Webinar on World Glaucoma Day: 10 March 2022, 1–2 pm GMT (UK time). We will be speaking the authors whose articles feature in this issue and there will be time for questions and feedback from our readers. Sign up for our newsletter to receive the Zoom link nearer the date. Visit www.cehjournal.org/subscribe/

Patient information



Glaucoma UK (previously the International Glaucoma Society) has published a range of very useful patient information leaflets which are available as free PDF downloads. <https://glaucoma.uk/product-category/informational-materials/>

Guidelines

The European Glaucoma Society guidelines

The most recent edition can be accessed at www.eugs.org/eng/guidelines.asp (accessed 1 June 2021)

American Academy of Ophthalmology. Preferred Practice Pattern: Primary Open Angle Glaucoma. www.aao.org/preferred-practice-pattern/primary-open-angle-glaucoma-ppp

American Academy of Ophthalmology. Preferred Practice Pattern: Primary Angle Closure Disease. www.aao.org/preferred-practice-pattern/primary-angle-closure-disease-ppp

Previous articles from the *Community Eye Health Journal*

How to assess a patient for glaucoma www.cehjournal.org/article/how-to-assess-a-patient-for-glaucoma/

Visual field testing for glaucoma – a practical guide www.cehjournal.org/article/visual-field-testing-for-glaucoma-a-practical-guide/

Emergency management: angle-closure glaucoma www.cehjournal.org/article/emergency-management-angle-closure-glaucoma/

Managing a patient with open-angle glaucoma: a case study www.cehjournal.org/article/managing-a-patient-with-open-angle-glaucoma-a-case-study/

Primary open-angle glaucoma: everyone's business www.cehjournal.org/article/primary-open-angle-glaucoma-everyones-business/

'An ideal service for glaucoma would be...' www.cehjournal.org/article/an-ideal-service-for-glaucoma-would-be/

Patients and glaucoma: what are the challenges? www.cehjournal.org/article/patients-and-glaucoma-what-are-the-challenges/

Conversations with glaucoma patients www.cehjournal.org/article/conversations-with-glaucoma-patients/