



# Test your knowledge and understanding

This page is designed to test your understanding of the concepts covered in this issue and to give you an opportunity to reflect on what you have learnt. The multiple true/false questions were produced in collaboration with the International Council of Ophthalmology (ICO). Please visit [www.cehjournal.org](http://www.cehjournal.org) to complete these questions online.

1. Think about the barriers to cataract services		True	False
a	Cataract surgical coverage is usually higher in men than in women.	<input type="checkbox"/>	<input type="checkbox"/>
b	Most patients who are blind from cataract are willing to come for surgery no matter how much it costs.	<input type="checkbox"/>	<input type="checkbox"/>
c	Traditional beliefs, e.g. about going blind when the hair turns white, are no longer important.	<input type="checkbox"/>	<input type="checkbox"/>
d	A person who has had successful cataract surgery can be helpful in persuading others to come for surgery.	<input type="checkbox"/>	<input type="checkbox"/>
2. Think about the costs and quality of cataract services		True	False
a	If a hospital does a small number of operations and has a waiting list it means there is a need to increase patient demand for services.	<input type="checkbox"/>	<input type="checkbox"/>
b	All patients should have presenting visual acuity better than 6/18 one month after cataract surgery.	<input type="checkbox"/>	<input type="checkbox"/>
c	Offering tiered fees for cataract services is one way in which paying patients can subsidise the costs for poor patients.	<input type="checkbox"/>	<input type="checkbox"/>
d	Accurate biometry is important in providing good quality cataract surgery.	<input type="checkbox"/>	<input type="checkbox"/>

**ANSWERS**

1. a. True. b. True. c. True. d. True. 2. a. True. b. True. c. True. d. True. 3. a. True. b. True. c. True. d. True. 4. a. True. b. True. c. True. d. True. 5. a. True. b. True. c. True. d. True. 6. a. True. b. True. c. True. d. True. 7. a. True. b. True. c. True. d. True. 8. a. True. b. True. c. True. d. True. 9. a. True. b. True. c. True. d. True. 10. a. True. b. True. c. True. d. True. 11. a. True. b. True. c. True. d. True. 12. a. True. b. True. c. True. d. True. 13. a. True. b. True. c. True. d. True. 14. a. True. b. True. c. True. d. True. 15. a. True. b. True. c. True. d. True. 16. a. True. b. True. c. True. d. True. 17. a. True. b. True. c. True. d. True. 18. a. True. b. True. c. True. d. True. 19. a. True. b. True. c. True. d. True. 20. a. True. b. True. c. True. d. True. 21. a. True. b. True. c. True. d. True. 22. a. True. b. True. c. True. d. True. 23. a. True. b. True. c. True. d. True. 24. a. True. b. True. c. True. d. True. 25. a. True. b. True. c. True. d. True. 26. a. True. b. True. c. True. d. True. 27. a. True. b. True. c. True. d. True. 28. a. True. b. True. c. True. d. True. 29. a. True. b. True. c. True. d. True. 30. a. True. b. True. c. True. d. True. 31. a. True. b. True. c. True. d. True. 32. a. True. b. True. c. True. d. True. 33. a. True. b. True. c. True. d. True. 34. a. True. b. True. c. True. d. True. 35. a. True. b. True. c. True. d. True. 36. a. True. b. True. c. True. d. True. 37. a. True. b. True. c. True. d. True. 38. a. True. b. True. c. True. d. True. 39. a. True. b. True. c. True. d. True. 40. a. True. b. True. c. True. d. True. 41. a. True. b. True. c. True. d. True. 42. a. True. b. True. c. True. d. True. 43. a. True. b. True. c. True. d. True. 44. a. True. b. True. c. True. d. True. 45. a. True. b. True. c. True. d. True. 46. a. True. b. True. c. True. d. True. 47. a. True. b. True. c. True. d. True. 48. a. True. b. True. c. True. d. True. 49. a. True. b. True. c. True. d. True. 50. a. True. b. True. c. True. d. True. 51. a. True. b. True. c. True. d. True. 52. a. True. b. True. c. True. d. True. 53. a. True. b. True. c. True. d. True. 54. a. True. b. True. c. True. d. True. 55. a. True. b. True. c. True. d. True. 56. a. True. b. True. c. True. d. True. 57. a. True. b. True. c. True. d. True. 58. a. True. b. True. c. True. d. True. 59. a. True. b. True. c. True. d. True. 60. a. True. b. True. c. True. d. True. 61. a. True. b. True. c. True. d. True. 62. a. True. b. True. c. True. d. True. 63. a. True. b. True. c. True. d. True. 64. a. True. b. True. c. True. d. True. 65. a. True. b. True. c. True. d. True. 66. a. True. b. True. c. True. d. True. 67. a. True. b. True. c. True. d. True. 68. a. True. b. True. c. True. d. True. 69. a. True. b. True. c. True. d. True. 70. a. True. b. True. c. True. d. True. 71. a. True. b. True. c. True. d. True. 72. a. True. b. True. c. True. d. True. 73. a. True. b. True. c. True. d. True. 74. a. True. b. True. c. True. d. True. 75. a. True. b. True. c. True. d. True. 76. a. True. b. True. c. True. d. True. 77. a. True. b. True. c. True. d. True. 78. a. True. b. True. c. True. d. True. 79. a. True. b. True. c. True. d. True. 80. a. True. b. True. c. True. d. True. 81. a. True. b. True. c. True. d. True. 82. a. True. b. True. c. True. d. True. 83. a. True. b. True. c. True. d. True. 84. a. True. b. True. c. True. d. True. 85. a. True. b. True. c. True. d. True. 86. a. True. b. True. c. True. d. True. 87. a. True. b. True. c. True. d. True. 88. a. True. b. True. c. True. d. True. 89. a. True. b. True. c. True. d. True. 90. a. True. b. True. c. True. d. True. 91. a. True. b. True. c. True. d. True. 92. a. True. b. True. c. True. d. True. 93. a. True. b. True. c. True. d. True. 94. a. True. b. True. c. True. d. True. 95. a. True. b. True. c. True. d. True. 96. a. True. b. True. c. True. d. True. 97. a. True. b. True. c. True. d. True. 98. a. True. b. True. c. True. d. True. 99. a. True. b. True. c. True. d. True. 100. a. True. b. True. c. True. d. True.

## Time to reflect

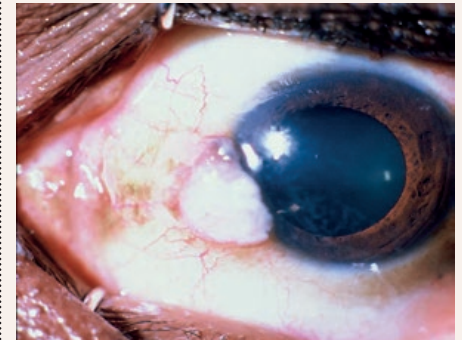
**1** How relevant to your day-to-day work was the material covered in this issue of the *Community Eye Health Journal*?  
**Extremely relevant, relevant, neither relevant nor irrelevant, irrelevant, extremely irrelevant** (circle as appropriate)

**2** How much of what you read in this issue was new to you?  
 Please give a percentage:

**3** As a result of reading this issue, will you be changing your practice/teaching/leadership/policies/management?  
**Yes / No** (circle as appropriate)

**4** If 'Yes', give examples of planned changes in the space provided, or in your own continued professional development (CPD) diary.

## Diagnose This quiz



This 40-year-old patient in Africa presented with a history of a non-painful swelling on the conjunctiva first noticed three months ago. There was no history of injury. The other eye was normal.

- What is the diagnosis?
  - a. Pterygium
  - b. Bitot's spots
  - c. Episcleritis
  - d. Squamous cell carcinoma
  - e. Pinguecula
- Which of the following are known risk factors for the answer to question 1? Select all that apply.
  - a. Iritis
  - b. HIV infection
  - c. Ultraviolet radiation
  - d. Bowen's disease
  - e. Pinguecula
- Which of the following is the first line recommended treatment for the answer to question 1?
  - a. Chemotherapy
  - b. Laser treatment
  - c. Irradiation
  - d. Topical steroids
  - e. Wide surgical excision + cryotherapy

**ANSWERS**

1. Diagnosis: d. Squamous cell carcinoma. 2. Risk factors: b, c and d are all true. HIV positive status, exposure to ultraviolet light radiation, and the pre- (early) cancerous condition, Bowen's disease, may all predispose to squamous cell carcinoma of the conjunctiva. 3. Recommended treatment: Wide (2 mm edges) surgical excision leaving the sclera bare, if possible, cryotherapy should be applied to the bare sclera and conjunctival margins.

Visit [www.cehjournal.org](http://www.cehjournal.org) to complete the questions on this page online.