



Useful resources

Continued

Community Eye Health Journal Issues on the theme of trachoma

Trachoma and the SAFE strategy. Community Eye Health Journal Vol. 12 Issue 32 1999.

Available on-line www.jceh.co.uk

New hope for trachoma control. Community Eye Health Journal Vol. 7 Issue 14 1994. Available from ICEH

Manuals

Francis V and Turner V. Achieving community support for trachoma control – a guide for district health work. Geneva: WHO; 1993. WHO/PBL93.36. Available in English and French. Available from World Health Organization and ORCEA

Negrel A D, Taylor H R, West S. Guidelines for the rapid assessment of blinding trachoma. Geneva: WHO; 2001. WHO/PBD/GET/00.8 Available from World Health Organization

Reacher M, Foster A, Huber J. Trichiasis surgery for trachoma – the bilamellar tarsal rotation procedure. Geneva: WHO; 1993. WHO/PBL/93.29. Available in English. Available from World Health Organization and ORCEA

Sutter E, Foster A, Francis V. Hanyane – A village struggles for eye health. London: Macmillan Publishers Ltd; 1989. Available in English and French.

Available from ICEH Price: £5.00 + post and packaging to developing countries

World Health Organization (WHO). The SAFE strategy: Preventing trachoma. A guide for environmental sanitation and improved hygiene. Geneva: WHO; 2000. WHO/PBD/GET/00.7 Available in English and French (bilingual publication). Available from World Health Organization and ORCEA

World Health Organization (WHO). Trachoma Grading Card – a double-sided, illustrated card explaining a simplified grading system for recognising trachoma. Available in English only. Available from World Health Organization and ORCEA

Trachoma information materials in Portuguese. Available from Service De Oftalmologia Sanitaria

Sutton S, Nkoloma H. Encouraging change. This book aims to enable people to improve their well being through better water supply, water use, sanitation and hygiene. Available from TALC. Price: £6.00

Sutton S, Nkoloma H. Low cost water improvements. Available from TALC. Price £5.25

The TALC Fly Trap. Leaflet on how to make a simple trap to reduce the fly population. Available free from TALC

Slides

ICEH Trachoma Slides/Text Teaching Series

Second edition 1999

This teaching set discusses risk factors for the transmission of Chlamydia trachomatis, clinical features of the eye disease using the simplified WHO classification, medical and surgical treatments and preventive measures including recommendations for personal and community hygiene and

sanitation. It particularly emphasises the SAFE strategy for the control of trachoma. Available from ICEH Price: £15 + post and packaging for developing countries; £20 + post and packaging elsewhere. Also available to download as a PowerPoint presentation, single Word document and image files from www.iceh.org.uk/files/tsno7/start.htm

ASTRA CD-ROM

ASTRA is a rapid and reliable tool for classifying communities according to the prevalence of active trachoma. If coupled with spatial sampling techniques the method may be used to map trachoma prevalence over wide areas at reasonable cost. Operational research into using ASTRA to map the wide area prevalence of trachoma is currently ongoing in Vietnam. A CD ROM describing the ASTRA method is available. This CD ROM provides training material (video, slides, and manuals), background documents, and data collections forms for the ASTRA method as well as easy to use software for developing LQAS sampling plans. The CD ROM is available free of charge. Available from Mark Myatt, Brixton Health, 8 China Street, Llanidloes, Powys SY18 6AB, Wales, UK Email: mark@brixtonhealth.com

Web sites

International Trachoma Initiative

www.trachoma.org/home.asp

Trachoma Information Service www.kcco.net

WHO Global elimination of trachoma meeting and workshop reports

www.who.int/pbd/publications/trachoma/en/

BBC World Service Trust

www.bbc.co.uk/worldservice/trust

This website provides a description and photographs of multimedia trachoma communication campaigns in Ghana, Ethiopia, Nepal and Niger developed by the BBC World Service Trust.

Addresses for ordering resources

International Resource Centre, International Centre for Eye Health, London School of Hygiene and Tropical Medicine, Keppel Street, London WC1E 7HT, UK.

Email: sue.stevens@lshtm.ac.uk

Website: www.iceh.org.uk

World Health Organization WHO Marketing and Dissemination, Avenue Appia, CH – 1211, Geneva 27, Switzerland. Email: bookorders@who.int

Website: bookorders.who.int

Ophthalmic Resource Centre for Eastern Africa (ORCEA) Kilimanjaro Centre for Community Ophthalmology. P O Box 2254, Moshi, Tanzania. Email: kcco@kcco.net

Website: www.kcco.net

Service De Oftalmologia Sanitaria Avenida Dr. Arnaldo, 351 – 6 Andar, Cerqueira Cesar, Sao Paulo, SP CEP 01246 – 902, Brazil. Fax: +55 11 853 3085 5962

Email: nhm2@ig.com.br dvoftal@saude.sp.gov.br

Website: www.cve.saude.sp.gov.br

Teaching Aids at Low Cost (TALC) PO Box 49, St Albans, Hertfordshire, AL1 5TX, UK. Email: info@talcuk.org Website: www.talcuk.org Fax: 44 1727 846852

WHO simplified trachoma grading system



John Anderson

TF Trachomatous Inflammation – Follicular

The presence of five or more follicles in the upper tarsal conjunctiva



Allen Foster

TI Trachomatous Inflammation – Intense

Pronounced inflammatory thickening of the tarsal conjunctiva that obscures more than half of the normal deep tarsal vessels



Hugh Taylor

TS Trachomatous Scarring

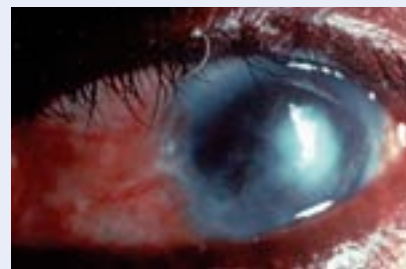
The presence of scarring in the tarsal conjunctiva



WHO

TT Trachomatous Trichiasis

At least one eyelash rubs on the eyeball or evidence of recent removal of inturned eyelashes



John Anderson

CO Corneal Opacity

Easily visible corneal opacity over the pupil

Journal design by Lance Bellers

Community Eye Health

JOURNAL

Supported by:



Christian Blind Mission International

sightsavers
INTERNATIONAL

Sight Savers International



Dark & Light Blind Care



Conrad N. Hilton Foundation

BCPB
British Council
for Prevention
of Blindness

(BCPB)

TIJSEN
FOUNDATION

Tijssen Foundation



International
Trachoma Initiative

Next issue



The next issue of the Community Eye Health Journal will be on the theme **Red eye – the primary eye care approach.**

Note from the Editor

Community Eye Health Journal has had a 'face lift' but not a change of content. Our new design helps us to include more content and present it in a way which can easily be used for training or adaptation. Hope you like it!

